

Labor Force and Unemployment Trends: Youth and Long Term Unemployed

For: South Central WDC Board of Directors

Donald W. Meseck
Regional Labor Economist

September 26, 2013



**Employment
Security
Department**
WASHINGTON STATE

Today's presentation

Unemployment rates and labor force trends in Kittitas, Klickitat, Skamania, and Yakima Counties.

- Slides 3-11

Employment Rates for Youth and Young Adults

- Slides 12-13

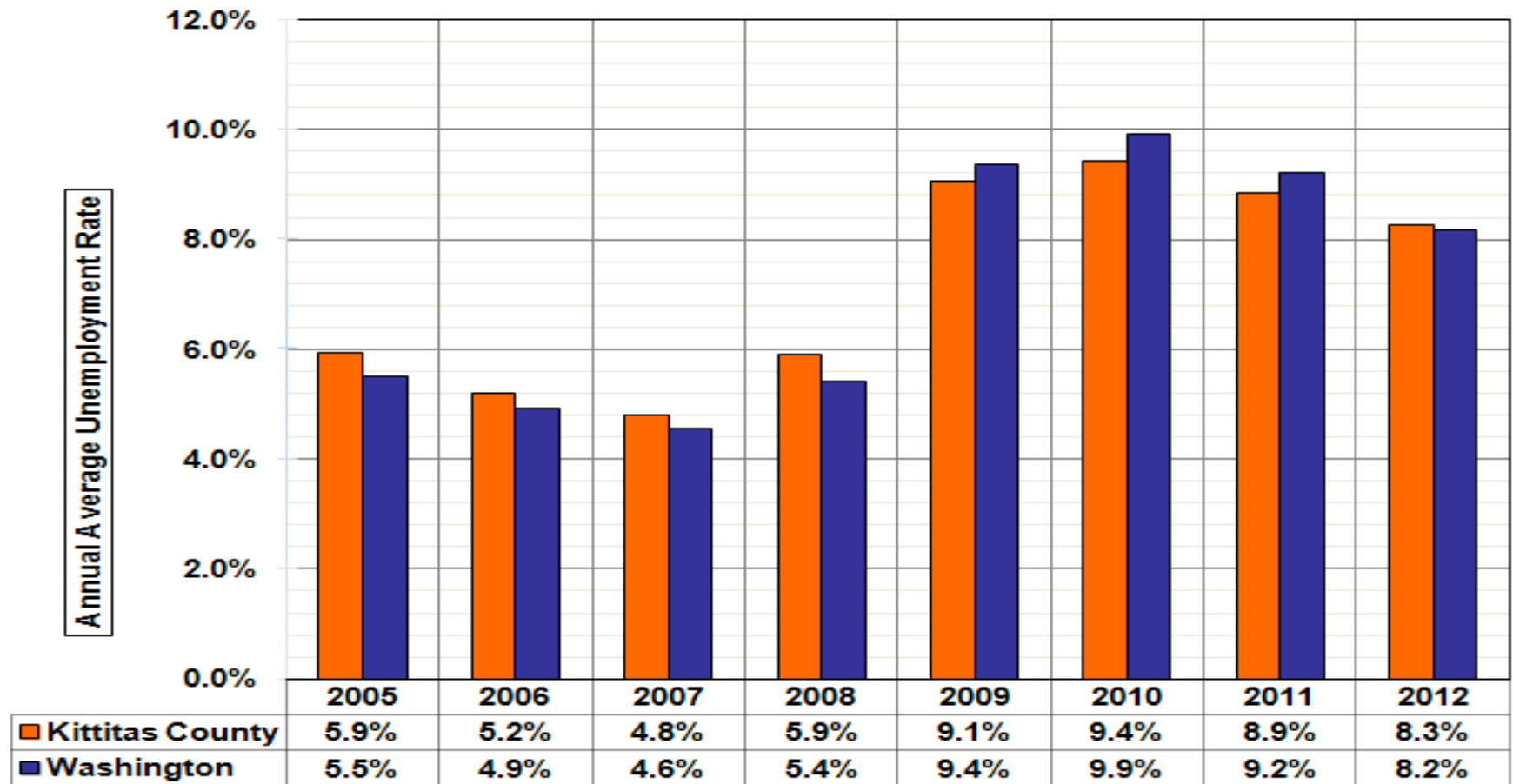
Labor Force Participation Rates for Older Workers

- Slides 14-15

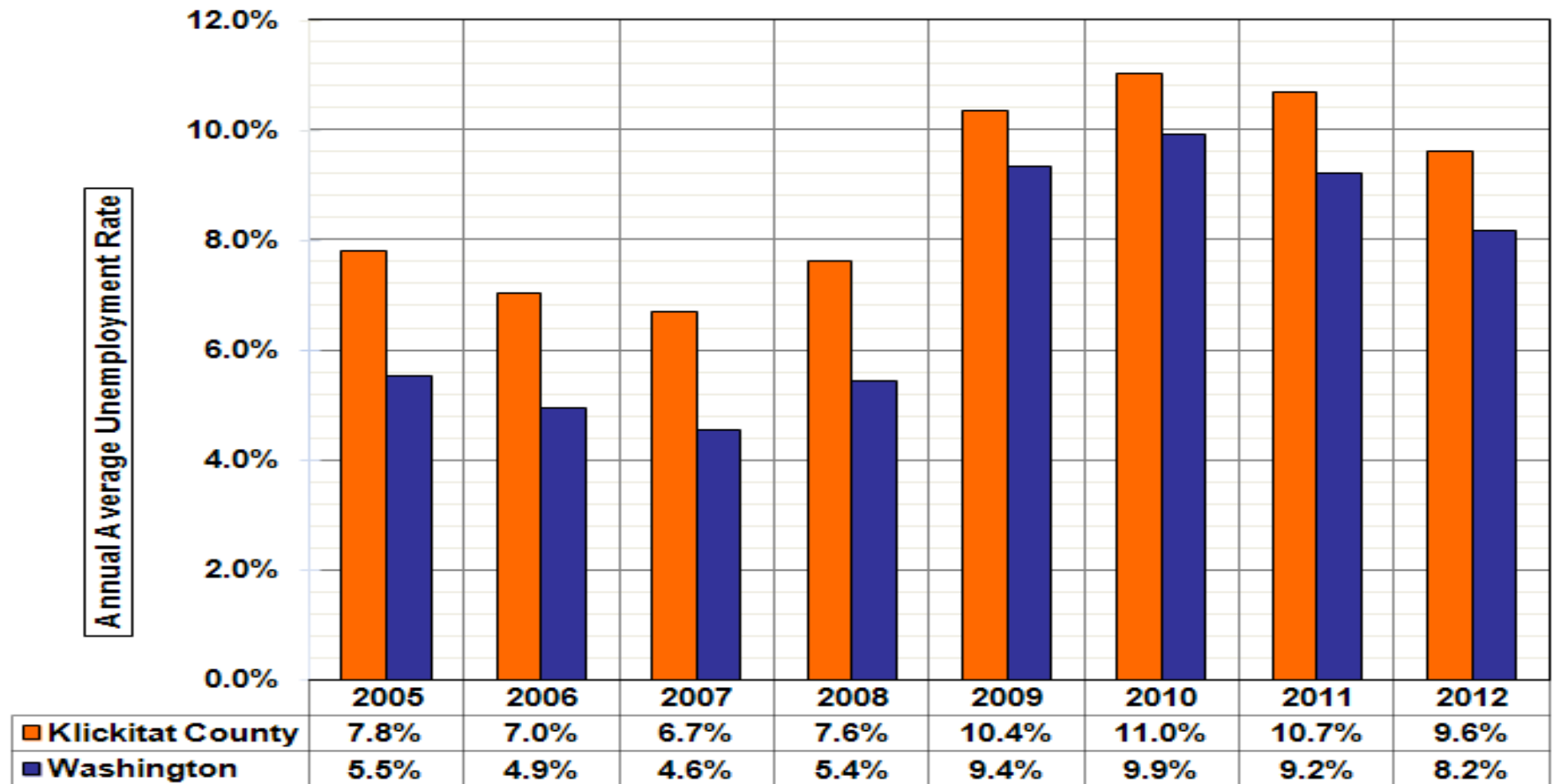
Questions

- Slide 16

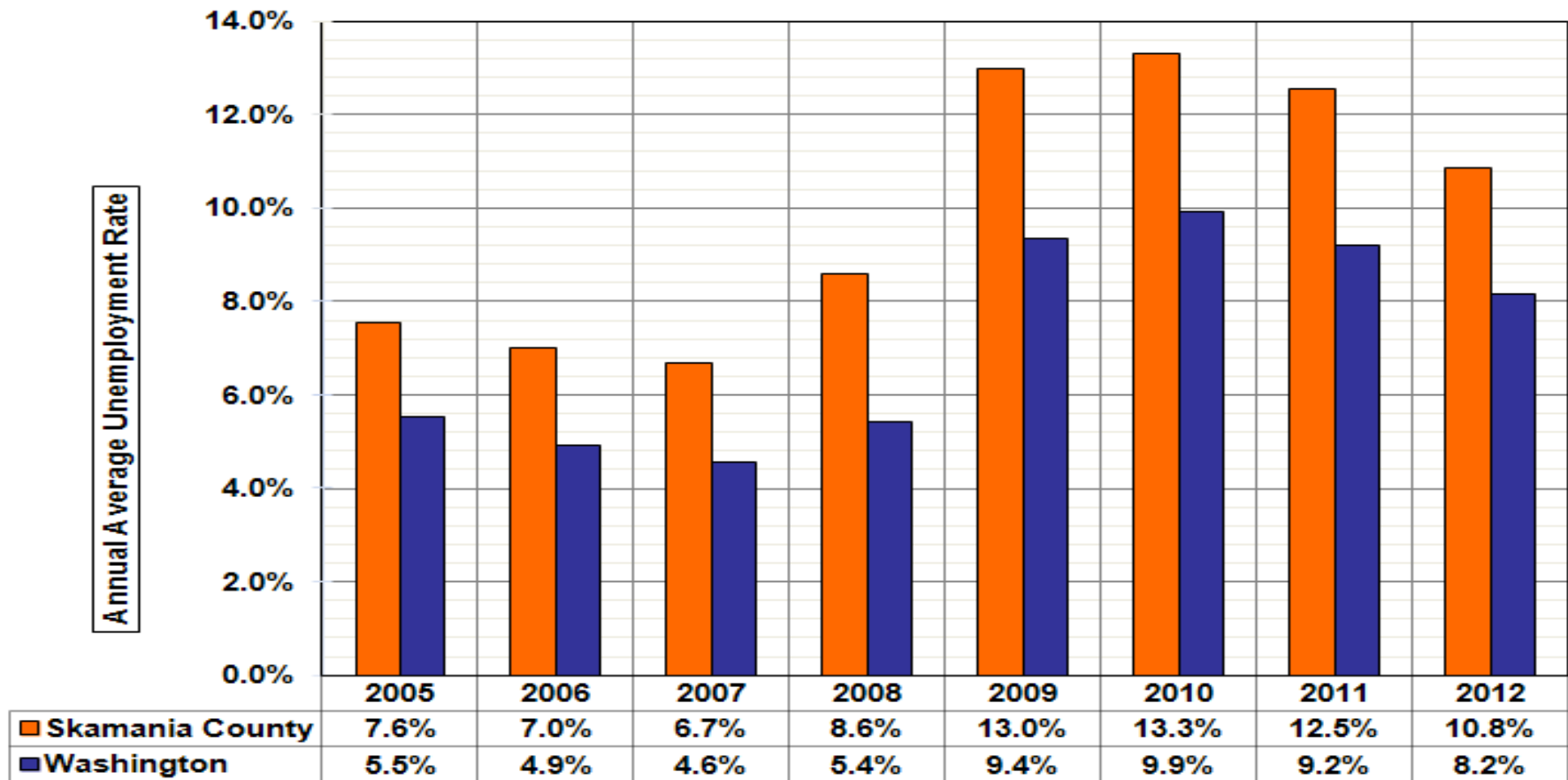
Annual Average Unemployment Rates in Kittitas County and in Washington from 2007-2012



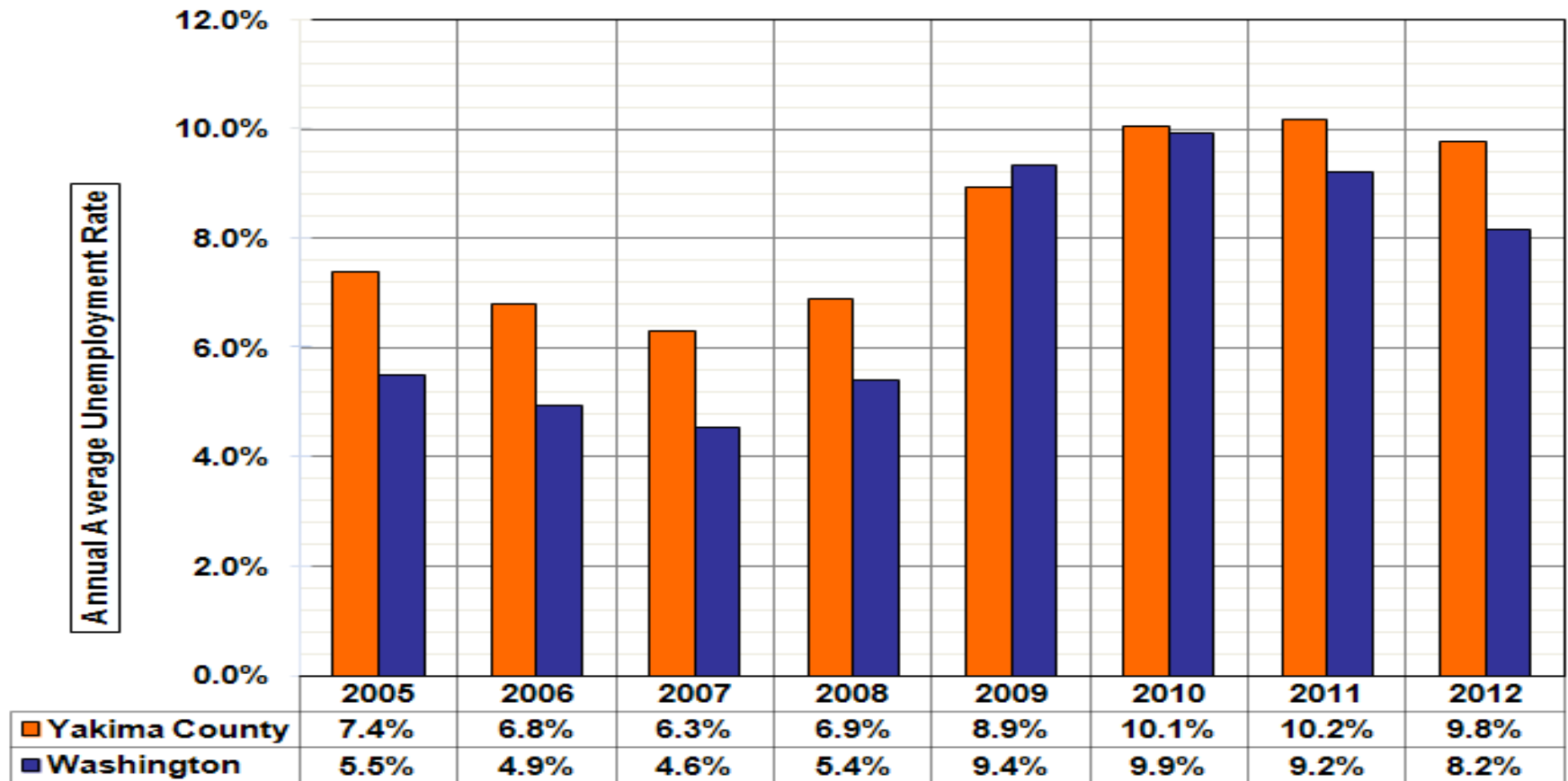
Annual Average Unemployment Rates in Klickitat County and in Washington from 2007-2012



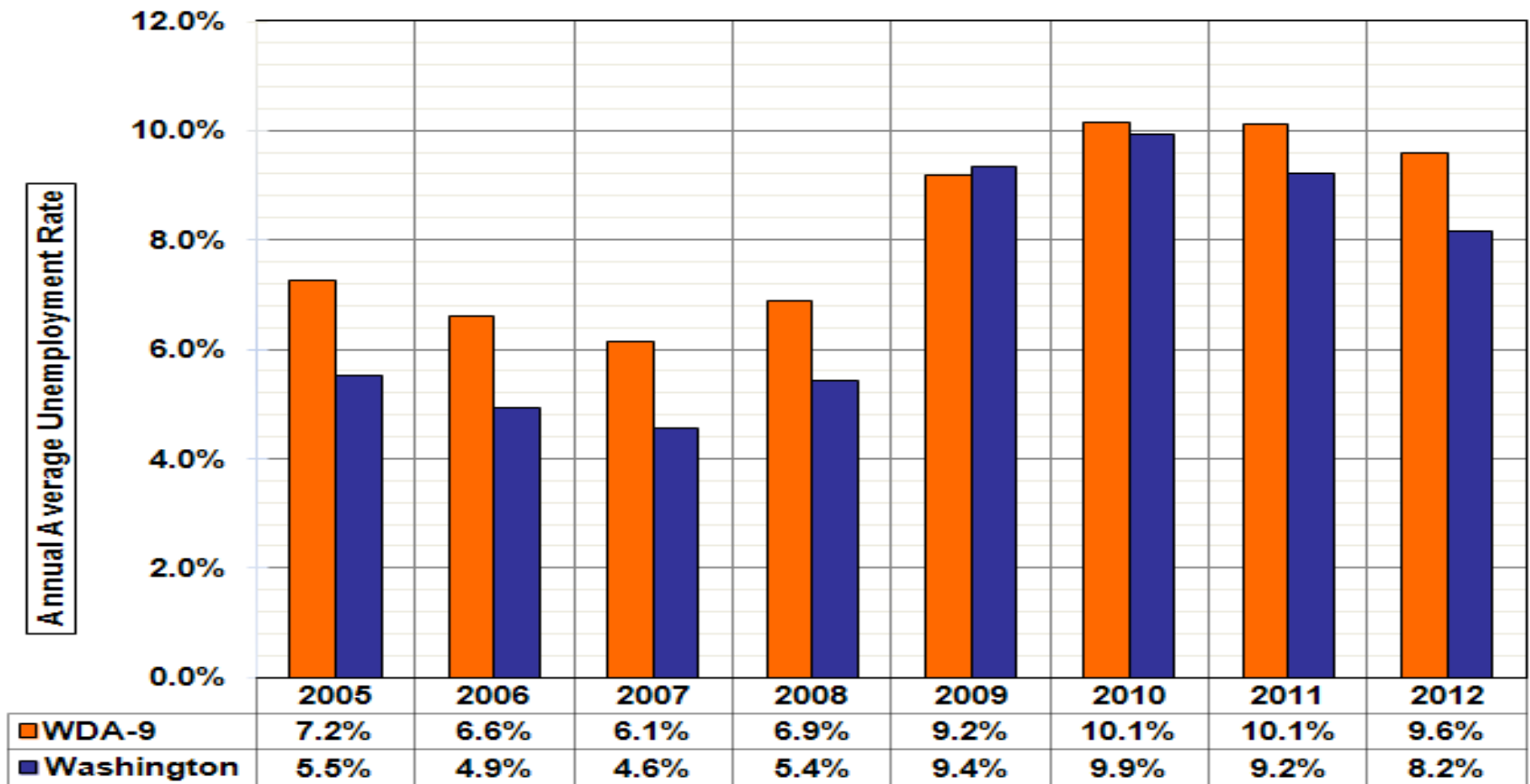
Annual Average Unemployment Rates in Skamania County and in Washington from 2007-2012



Annual Average Unemployment Rates in Yakima County and in Washington from 2007-2012



Annual Average Unemployment Rates in South Central WDC Area and in Washington from 2007-2012

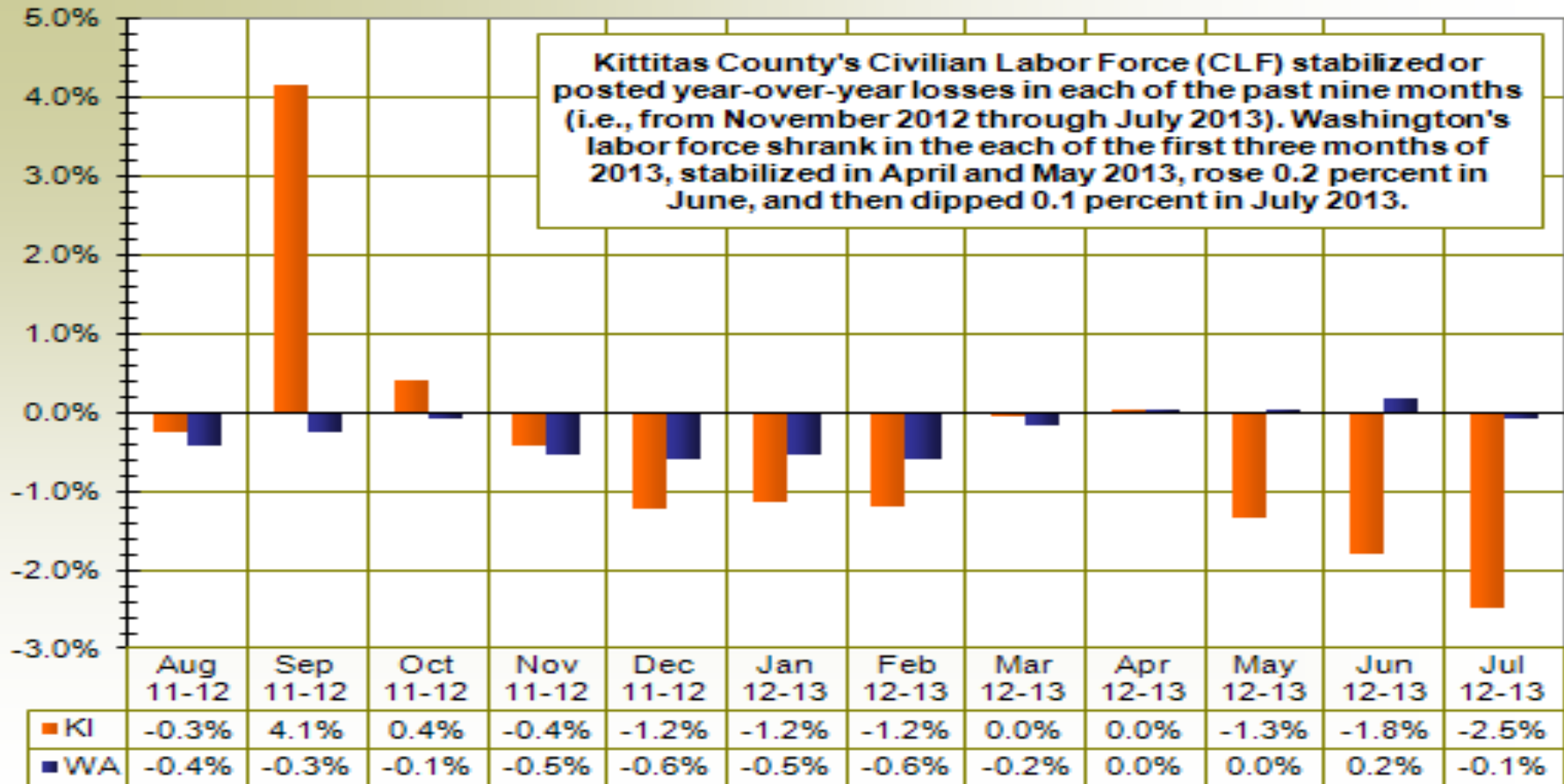


Summary of Unemployment Rate Changes in South Central WDC and in Washington from 2005-2012

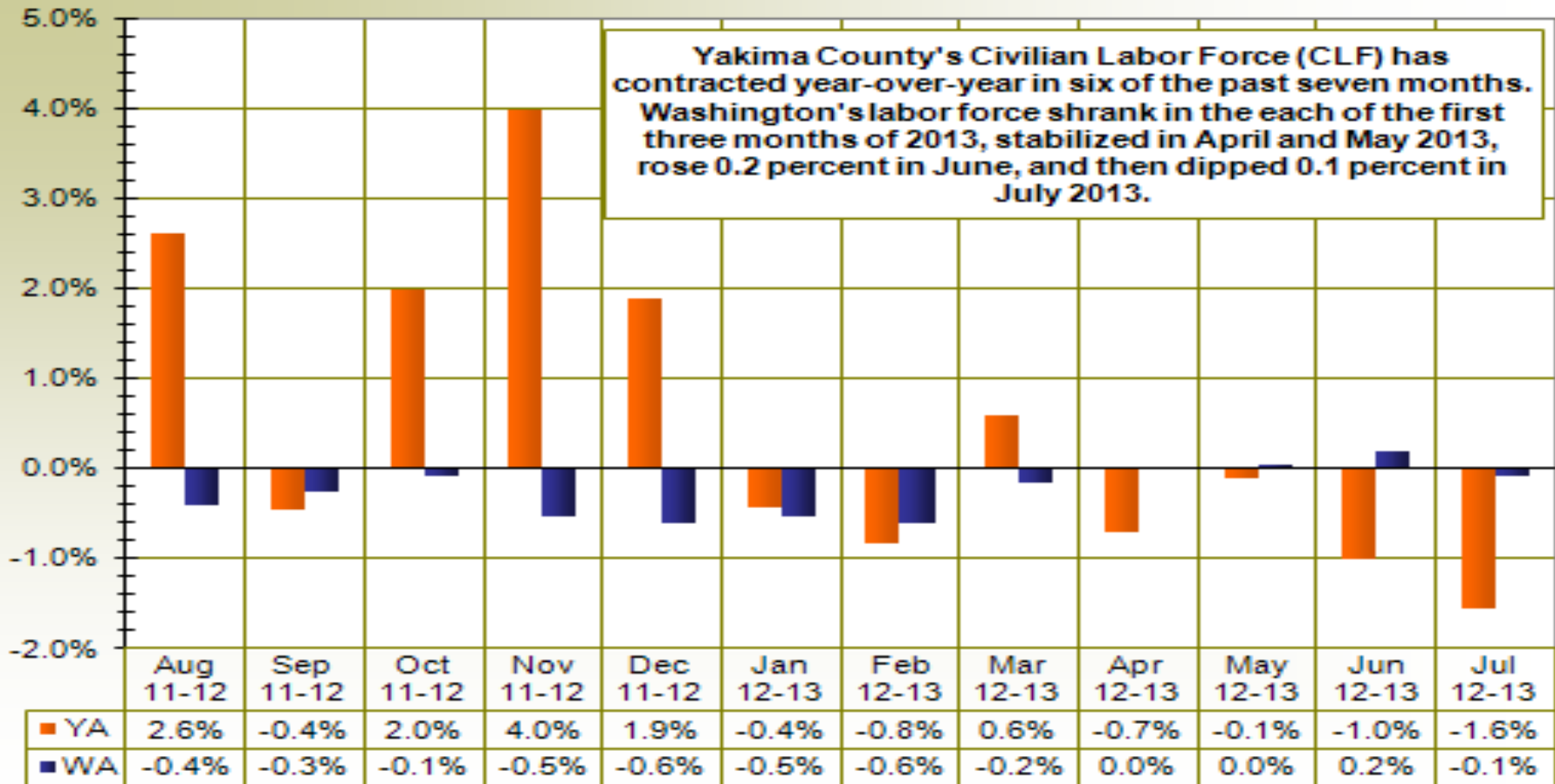
Two important takeaways in each of the previous five graphs are:

- Annual average unemployment rates in Kittitas, Klickitat, Skamania, and in Yakima counties, and in the State, were lower in each the of four years from 2005-2008, than rates in each of the last four years (from 2009-2012).
- Between 2011 and 2012 annual average unemployment rates in each county in the South Central Workforce Development Council (WDC) area declined.

Changes in Kittitas County's Civilian Labor Force (CLF) During the Last Twelve Months



Changes in Yakima County's Civilian Labor Force (CLF) During the Last Twelve Months



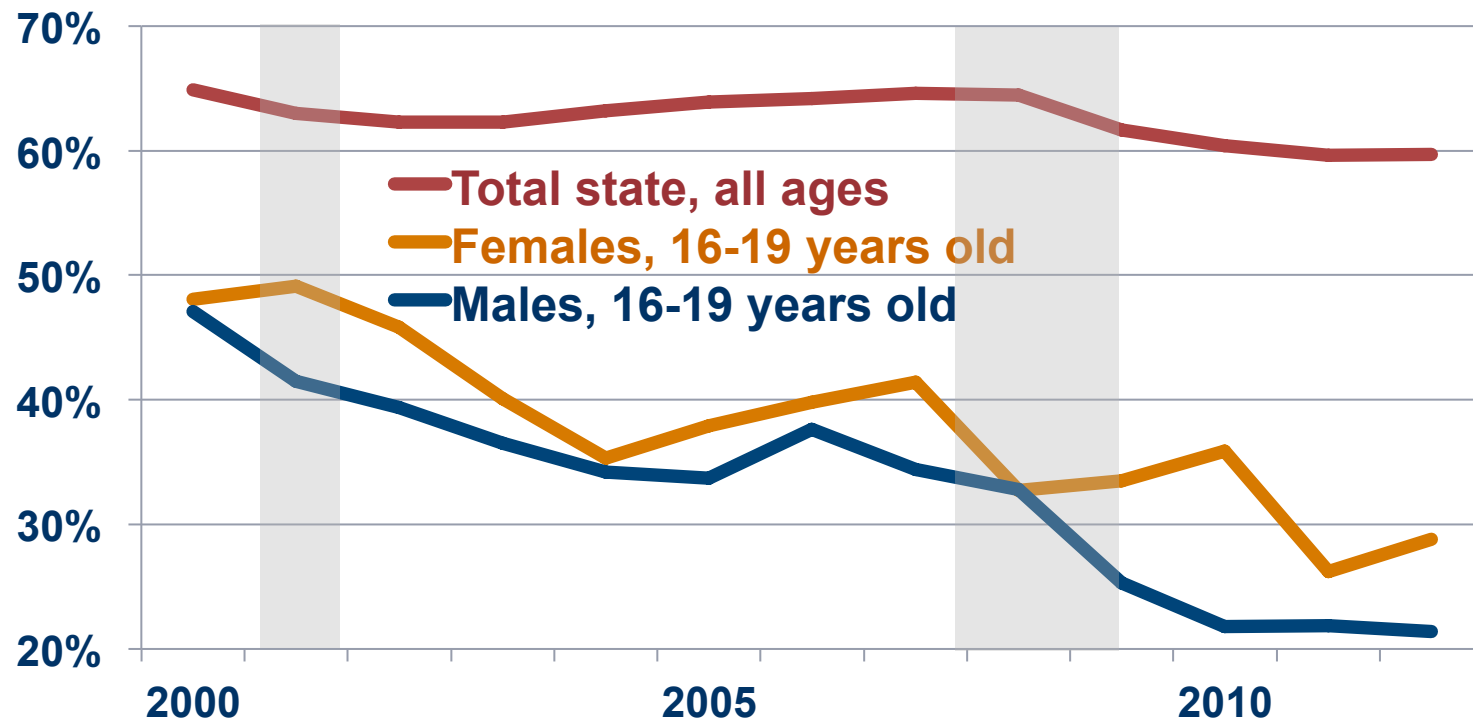
“Why are unemployment rates dropping if the labor force is shrinking?”

The answer is a good news – bad news scenario.

- **Good news -** Although the labor forces of Kittitas County and Yakima County have declined in most of the previous twelve months, the numbers of unemployed residents have decreased more rapidly.
- **Bad news –** A shrinking labor force is just about never good economic news.

Youth employment rates

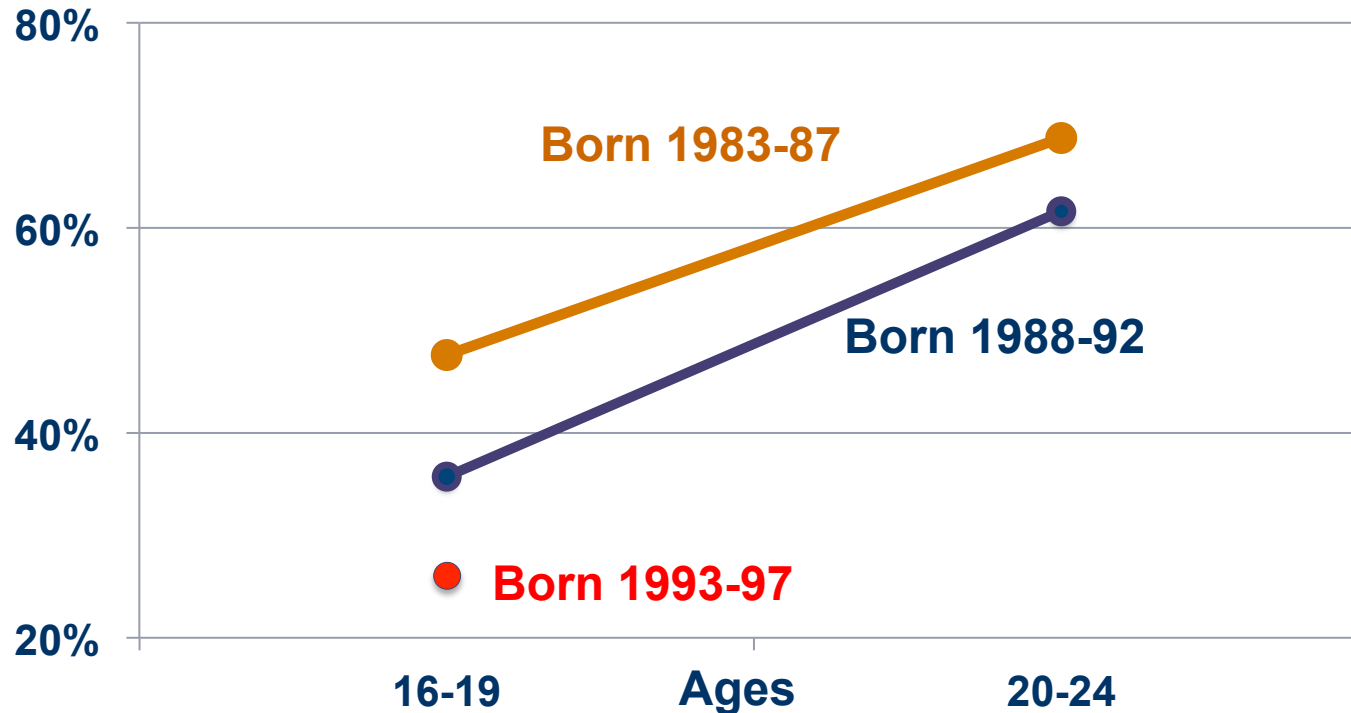
Severe job challenge for teens



Source: Employment Security Department/LMEA; U.S. Bureau of Labor Statistics, Current and Geographic Population Statistics. U.S. recessions shaded in gray.

Employment rates for teens and young adults

Employment rates at historic lows Ages 16-19 and 20-24, Washington

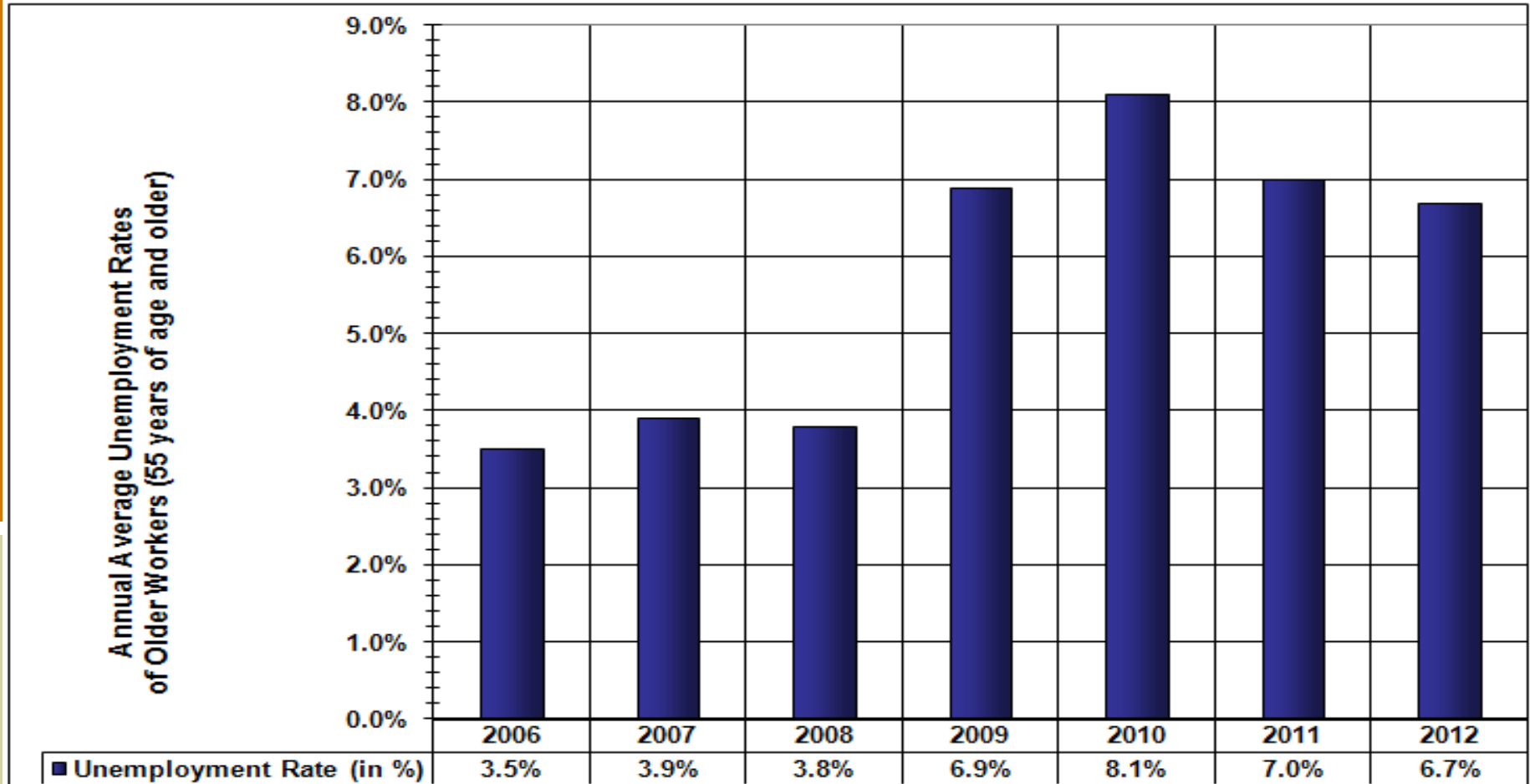


Source: Employment Security Department/LMEA; U.S. Bureau of Labor Statistics, Current and Geographic Population Statistics

Civilian Labor Force Status of Washington's Residents: 55 Years of Age or Older

(in thousands)	2006	2007	2008	2009	2010	2011	2012		% change (2006-2012)
55 +									
Civilian Population	1,437	1,504	1,522	1,594	1,655	1,731	1,786		24.3%
Civilian Labor Force (#)	547	590	629	665	717	714	742		35.6%
Civilian Labor Force (%)	38.1	39.2	41.3	41.7	43.3	41.2	41.5		
Employment	528	568	605	619	659	665	692		31.1%
Employment as percent of population	36.7%	37.8%	39.8%	38.8%	39.8%	38.4%	38.7%		
Unemployed	19	23	24	46	58	50	50		163.2%
Unemployment rate	3.5	3.9	3.8	6.9	8.1	7.0	6.7		
Unemployed (as a percentage of all unemployed)	11.3%	14.5%	12.9%	14.6%	16.1%	15.3%	17.4%		

Annual Average Unemployment Rates of Washington's Older Workers (55 Years and Older) from 2006-2012



Questions?

Donald W. Meseck
Regional Labor Economist
dmeseck@esd.wa.gov
509-573-4564