

# Yakima County – 2012 in Review

For: Greater Yakima Chamber of Commerce

**Donald W. Meseck**  
**Regional Labor Economist**

February 11, 2013



# Today's presentation

## Unemployment rates and labor force trends in Yakima County through 2012.

- Slides 3-6

## Quarterly Census of Employment and Wage (QCEW) summaries for Yakima County in 2011.

- Slides 7-11

## Nonfarm and agricultural trends through 2012.

- Slides 12-18

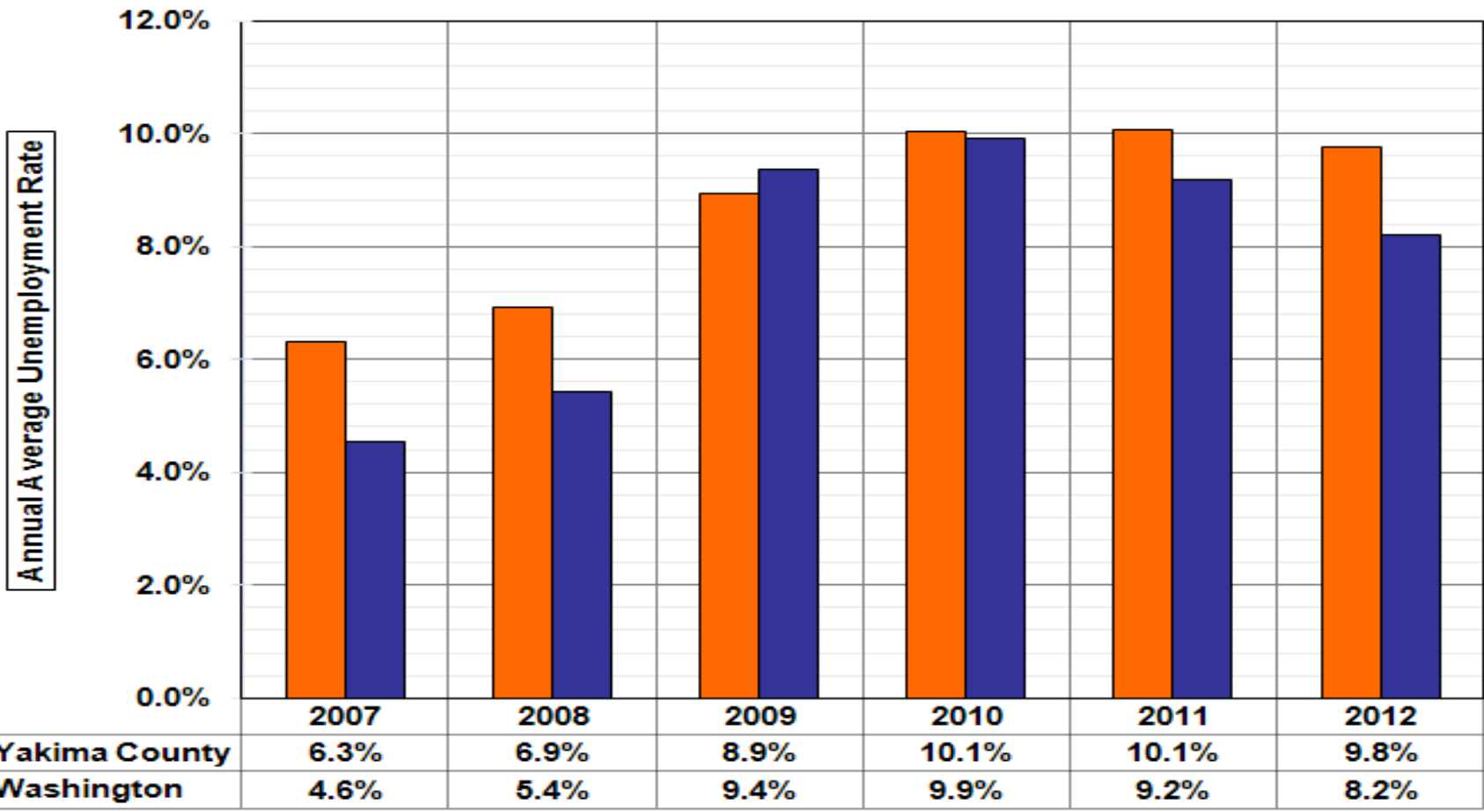
## Employment Projections for Yakima County

- Slides 19-20

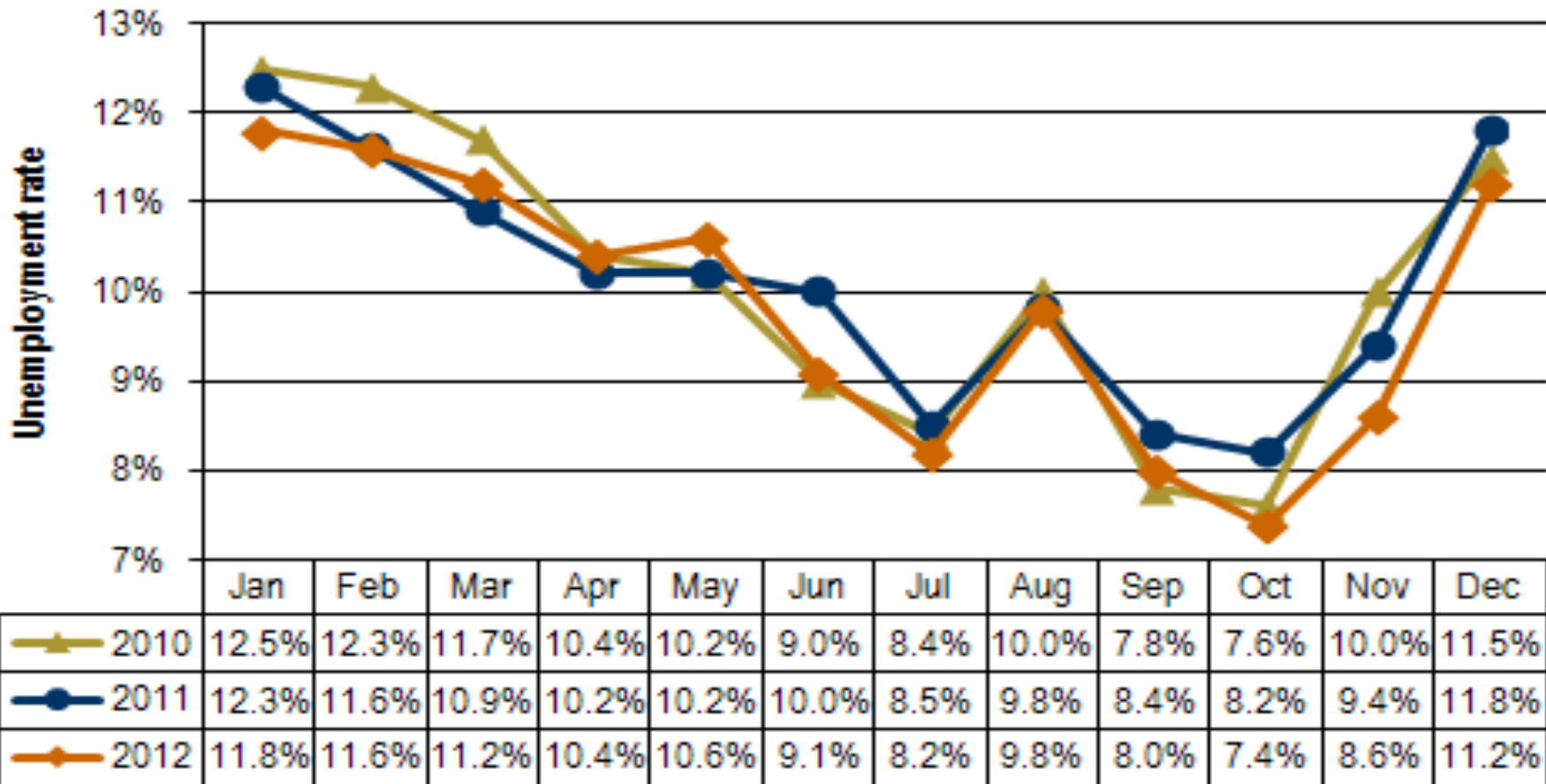
## Summary

- Slide 22

# Annual Average Unemployment Rates in Yakima County and in Washington from 2007-2012



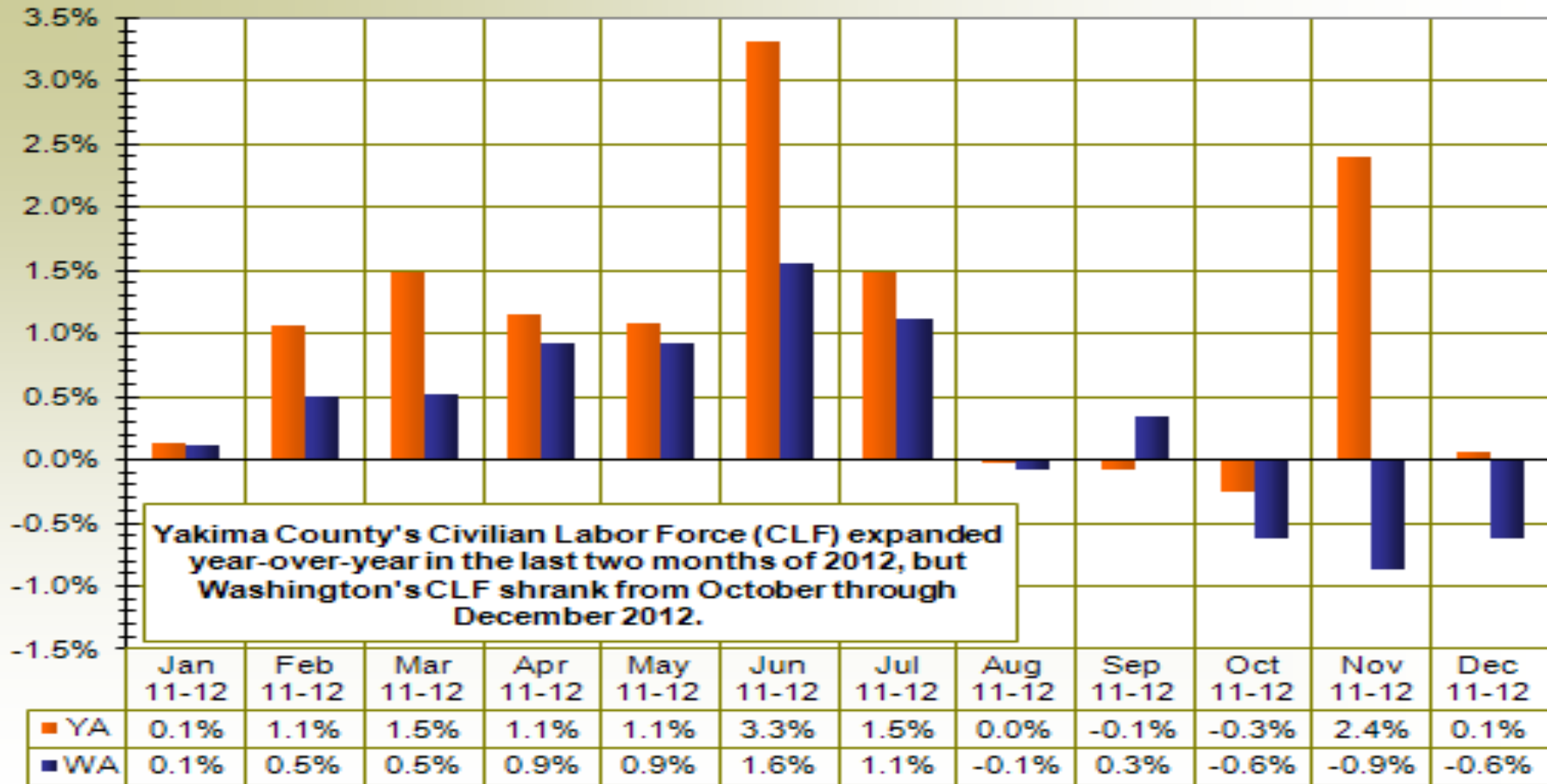
# Unemployment Rates in Yakima County: From January 2010-December 2012



# Yakima County's Civilian Labor Force: From December 2011-December 2012

				Change		
	Preliminary	Revised	Revised	Nov-12	Dec-11	Dec-11
Yakima County	Dec-12	Nov-12	Dec-11	Dec-12	Dec-12	Dec-12%
<b>Labor force and unemployment</b>						
Civilian labor force	118,870	122,100	118,800	-3,230	70	0.1%
Resident employment	105,600	111,550	104,770	-5,950	830	0.8%
Unemployment	13,270	10,550	14,030	2,720	-760	-5.4%
Unemployment rate	11.2	8.6	11.8	2.6	-0.6	

# Labor Force Changes in Yakima County and Washington in the last twelve months



# Analyzed county-level QCEW data for 22 industries/sectors

## 19 private-industry sectors

**NAICS 11** (Agriculture, forestry and fishing)

**NAICS 21** (Mining)

**NAICS 22** (Utilities)

**NAICS 23** (Construction)

**NAICS 31-33** (Manufacturing)

**NAICS 42** (Wholesale trade)

**NAICS 44-45** (Retail trade)

**NAICS 48-49** (Transportation and warehousing)

**NAICS 51** (Information)

**NAICS 52** (Finance and insurance)

**NAICS 53** (Real estate and rentals)

**NAICS 54** (Professional and business services)

**NAICS 55** (Management of companies)

**NAICS 56** (Administrative and waste services)

**NAICS 61** (Private education services)

**NAICS 62** (Health services)

**NAICS 71** (Arts, entertainment and recreation)

**NAICS 72** (Accommodation and food services)

**NAICS 81** (Other services)

## Three government sectors

Federal government

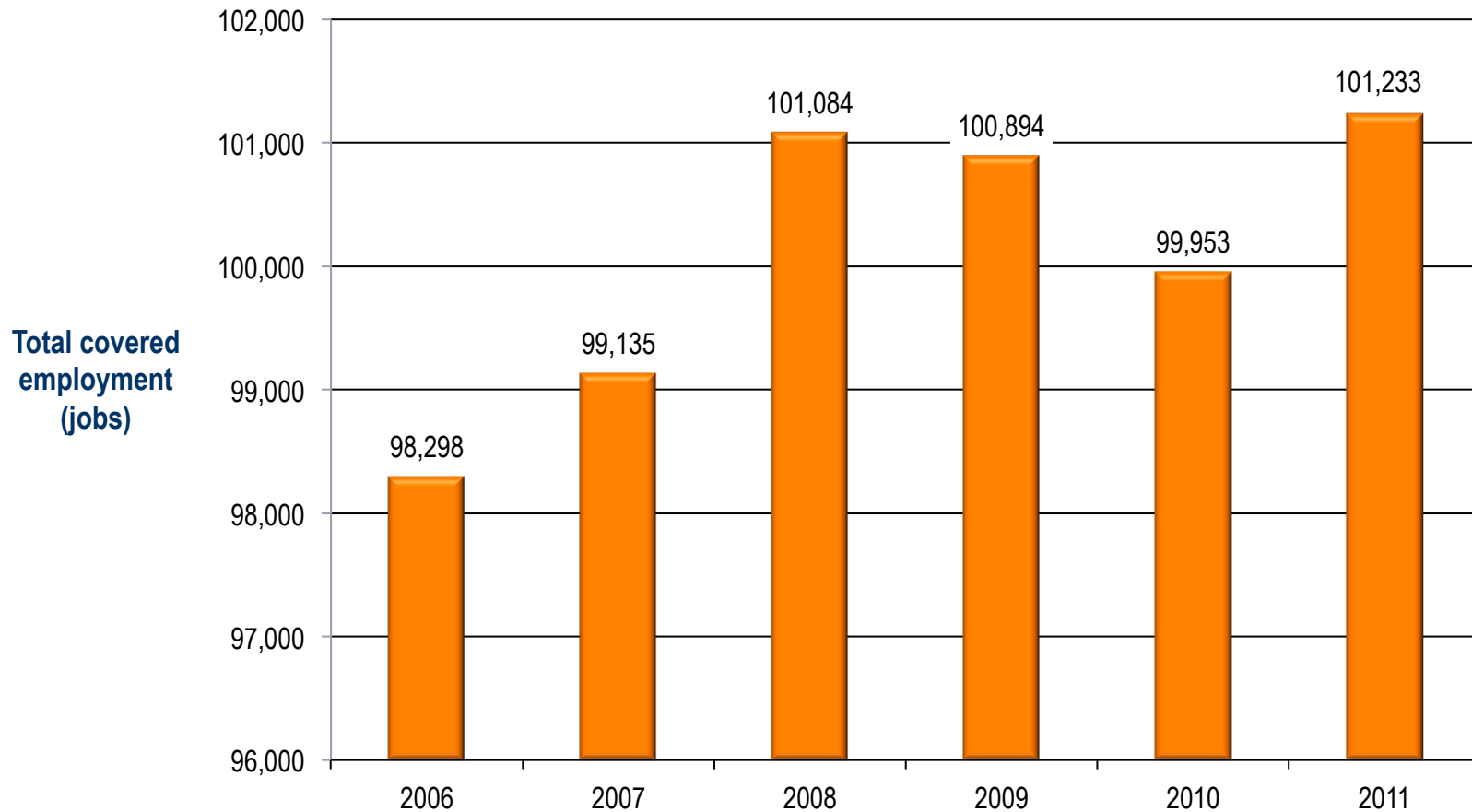
State government

Local government

\* North American Industry Classification System (NAICS)

QCEW is the Quarterly Census of Employment and Wages, a  
U.S. Bureau of Labor Statistics data set.

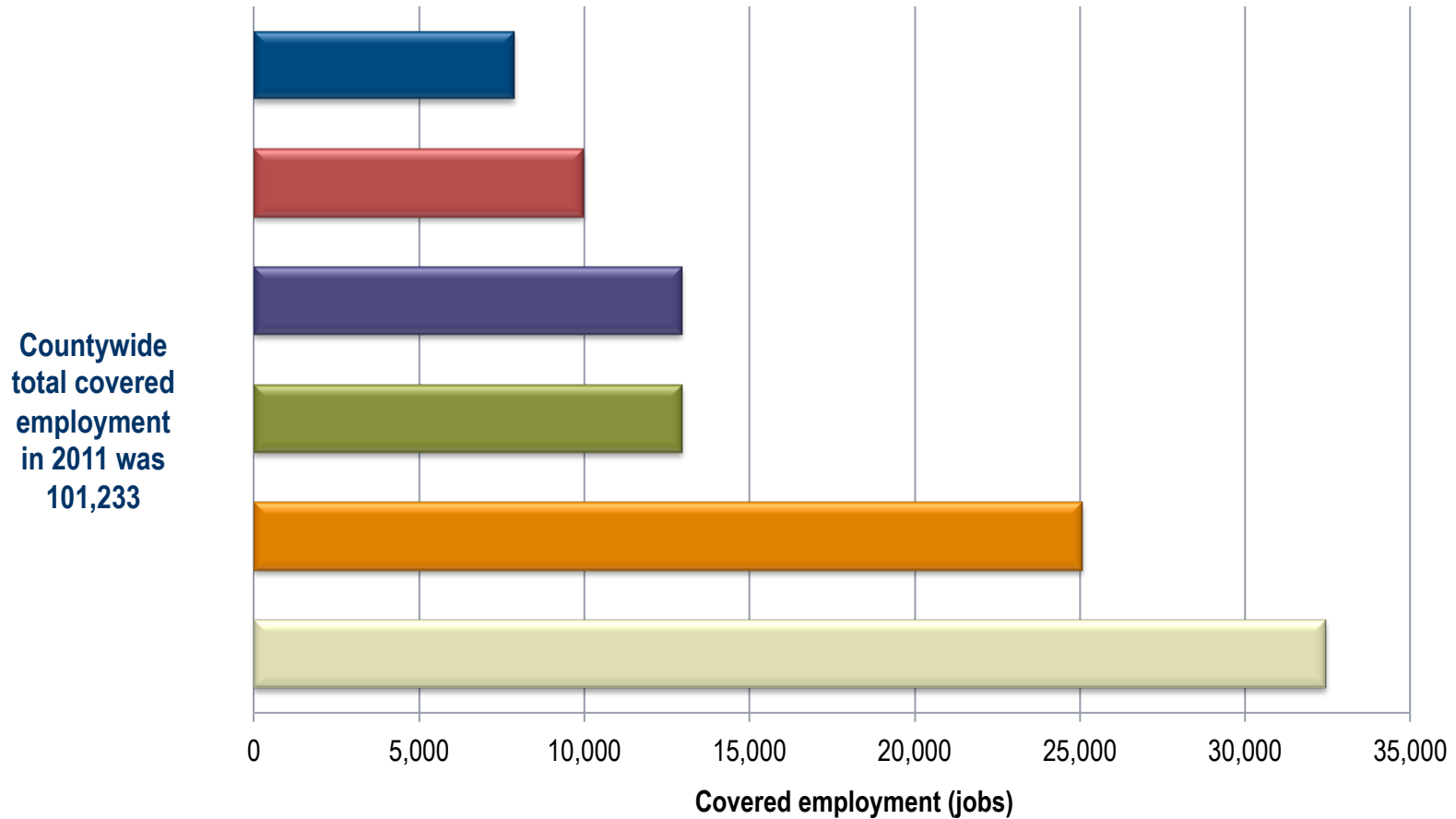
# Yakima County 2006-2011: Employment trends



Source: QCEW Data

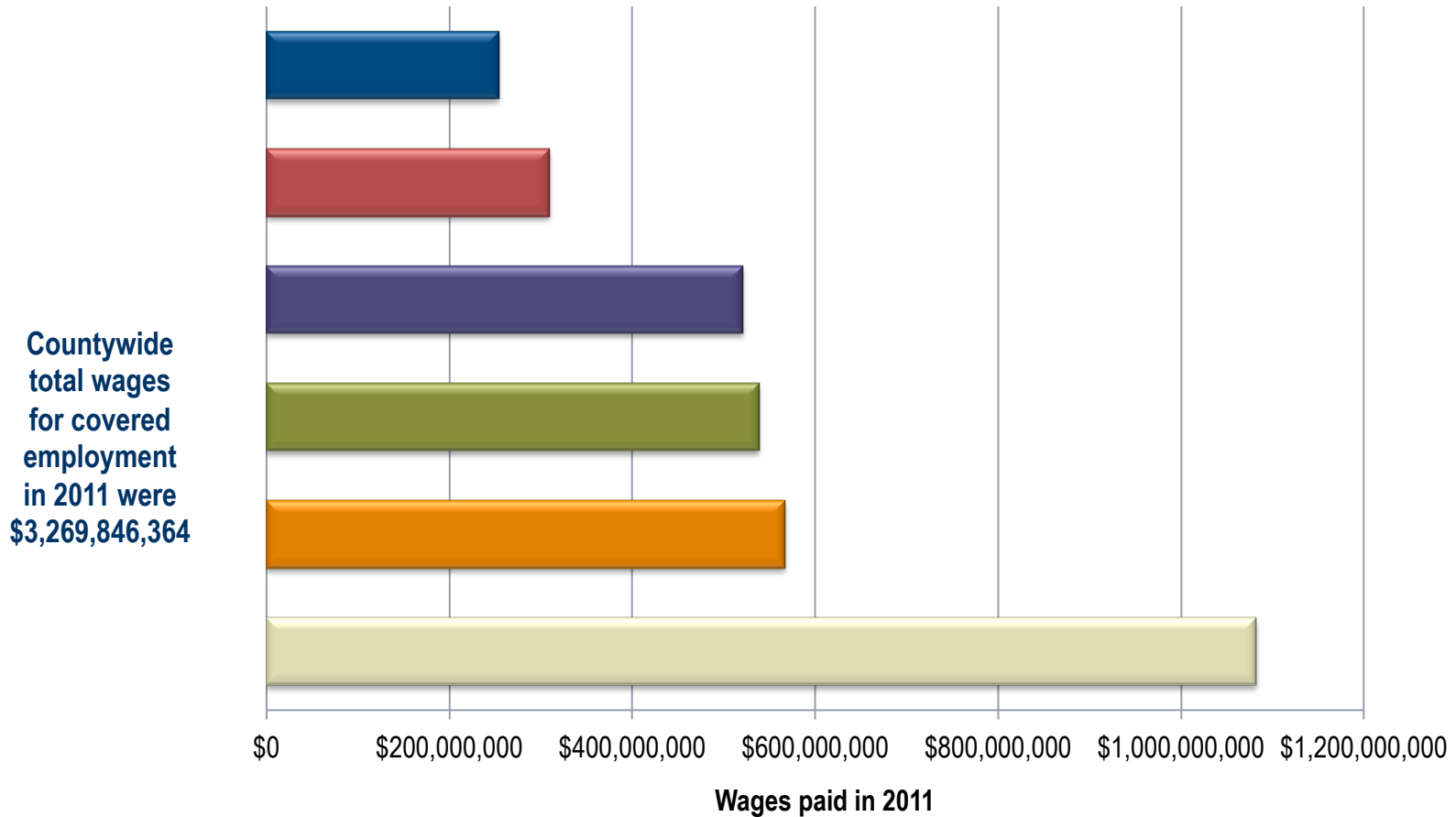


# Yakima County in 2011: Top 5 industries by employment



Source: QCEW Data

# Yakima County in 2011: Top 5 industries by wages



Source: QCEW Data

# Yakima County in 2011: Summary of “Top 5” industries

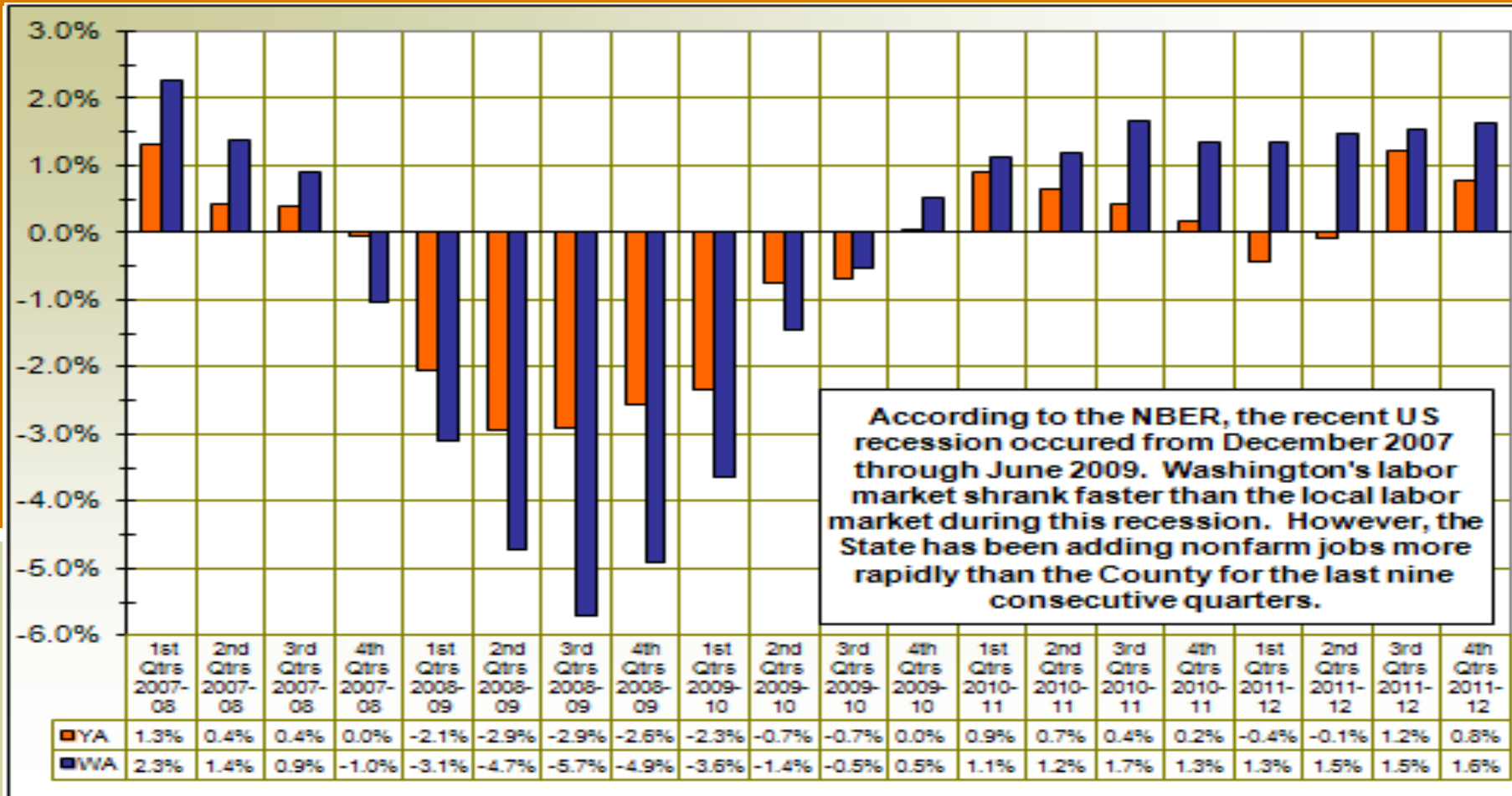
**Total covered wages = \$3.27 billion**

**Average annual employment = 101,233**

**Average annual wage = \$32,300**

Industry	Percent of jobs	Percent of wages
Agriculture	25	17
Health services	13	17
Local government	13	16
Retail trade	10	8
Manufacturing	8	10

# Yakima County and Washington: Nonfarm Employment Changes During the Last 20 Quarters (i.e., 2008-2012)



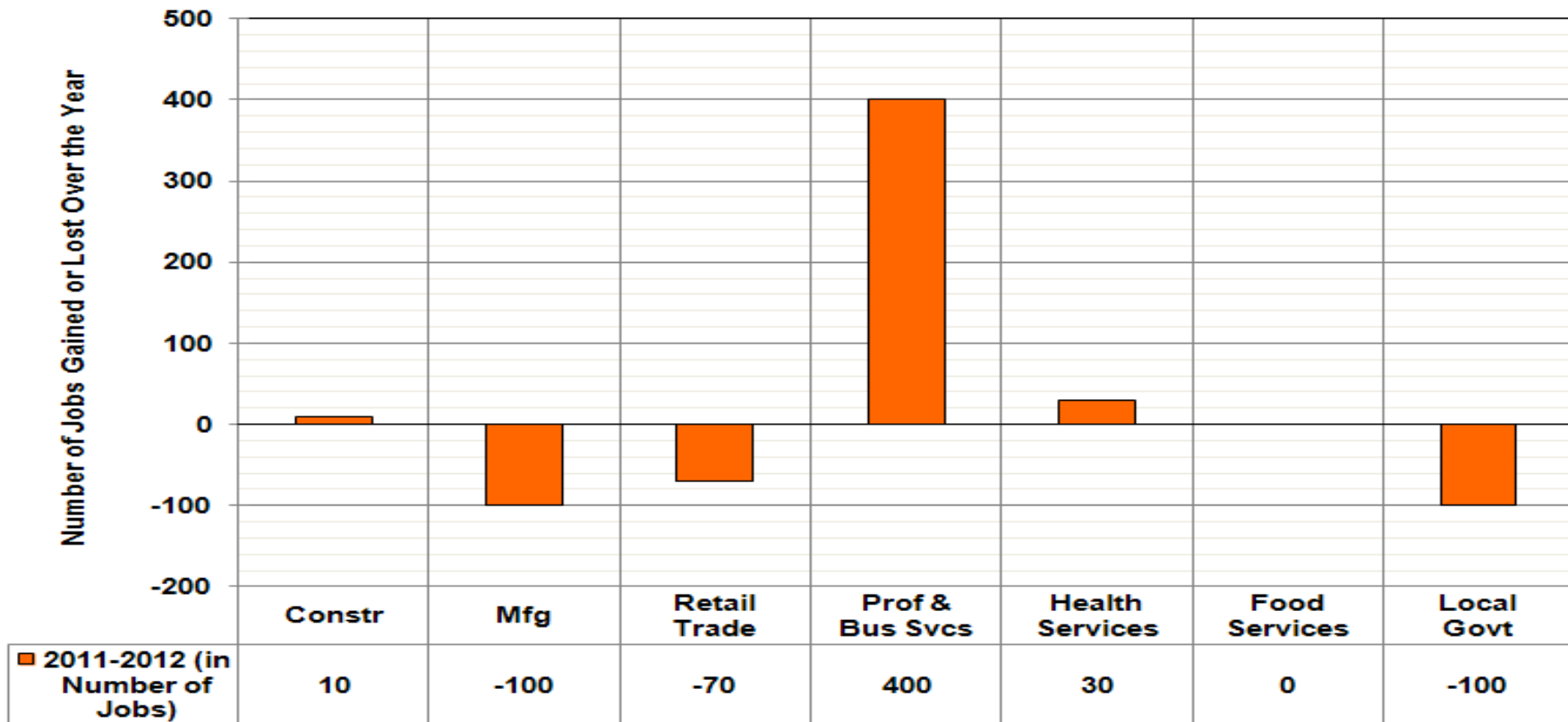
# Annual Average Nonfarm Changes in 2012

## Yakima County: Nonfarm Job Growth in Major Industries From 2011-2012

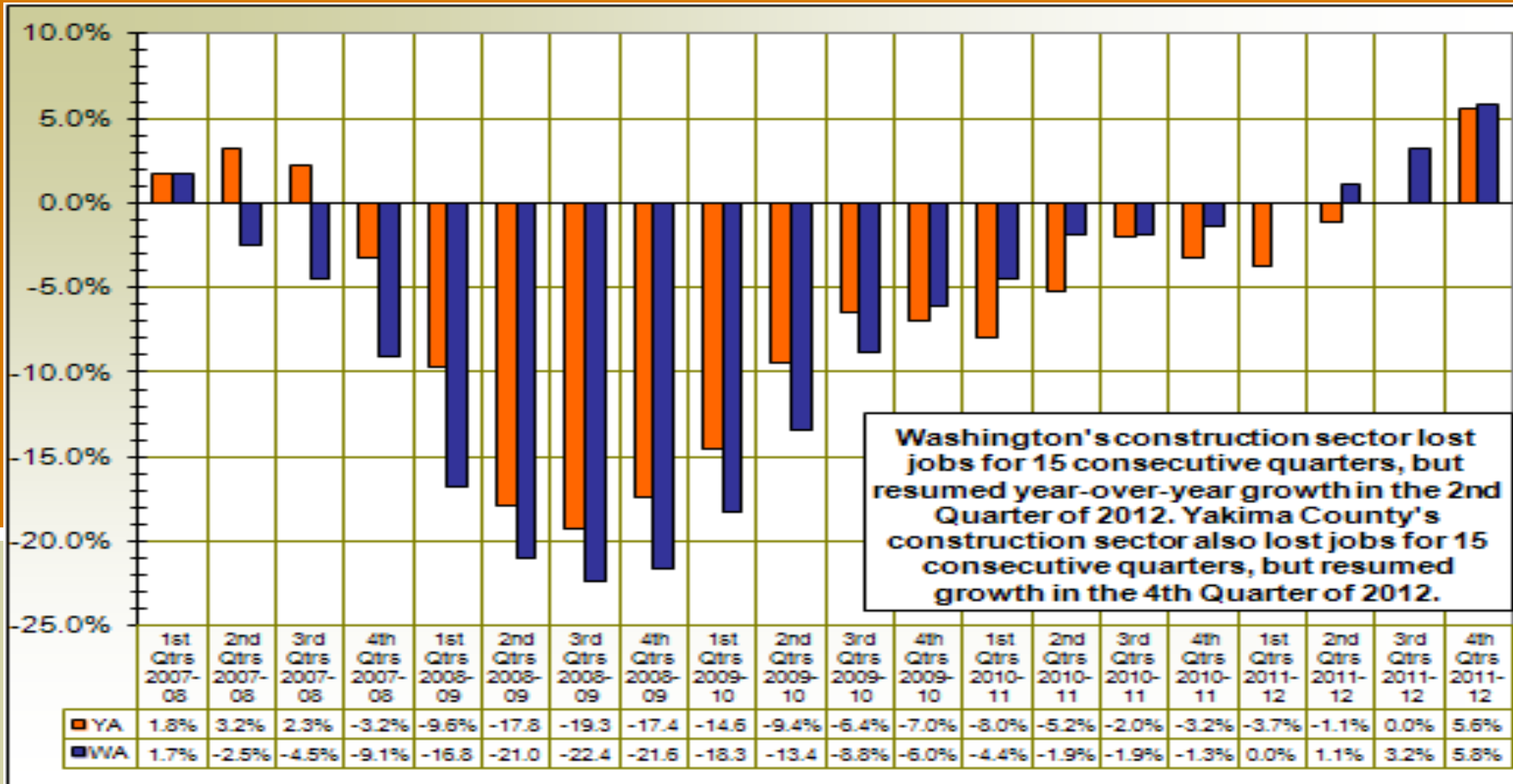
Industry	Ann. Avg. Employment in 2011	Ann. Avg. Employment in 2012	Job Change	Percent Change
Total Nonfarm	76.4	76.7	0.3	0.4%
Total Private	59.3	59.7	0.5	0.8%
Goods Producing	11.0	10.9	(0.1)	-0.8%
Mining, Logging, and Construction	3.0	3.0	0.0	0.3%
Manufacturing	8.0	7.9	(0.1)	-1.3%
Nondurable Goods	5.4	5.2	(0.1)	-2.2%
Service Providing	65.4	65.8	0.4	0.6%
Private Service Providing	48.3	48.8	0.6	1.2%
Trade, Transportation, and Utilities	17.3	17.2	(0.1)	-0.5%
Wholesale Trade	4.0	4.1	0.0	1.2%
Retail Trade	10.2	10.1	(0.1)	-0.7%
Transportation and Utilities	3.1	3.1	(0.1)	-2.4%
Professional and Business Services	4.1	4.5	0.4	9.8%
Education and Health Services	14.1	14.2	0.1	0.7%
Health Care and Social Assistance	13.1	13.1	0.0	0.3%
Leisure and Hospitality	6.6	6.7	0.0	0.1%
Food Services	4.7	4.7	0.0	0.0%
Government	17.2	17.0	(0.2)	-1.1%
Federal Government	1.3	1.3	(0.1)	-4.4%
State Government	2.7	2.7	(0.0)	-1.3%
Local Government	13.1	13.0	(0.1)	-0.8%

# Summary of Gains or Losses in Major Yakima County Nonfarm Industries in 2012 (in # of Jobs)

Comparison of Job Gains or Losses in Seven Major Yakima County Nonfarm Industries From 2011-2012

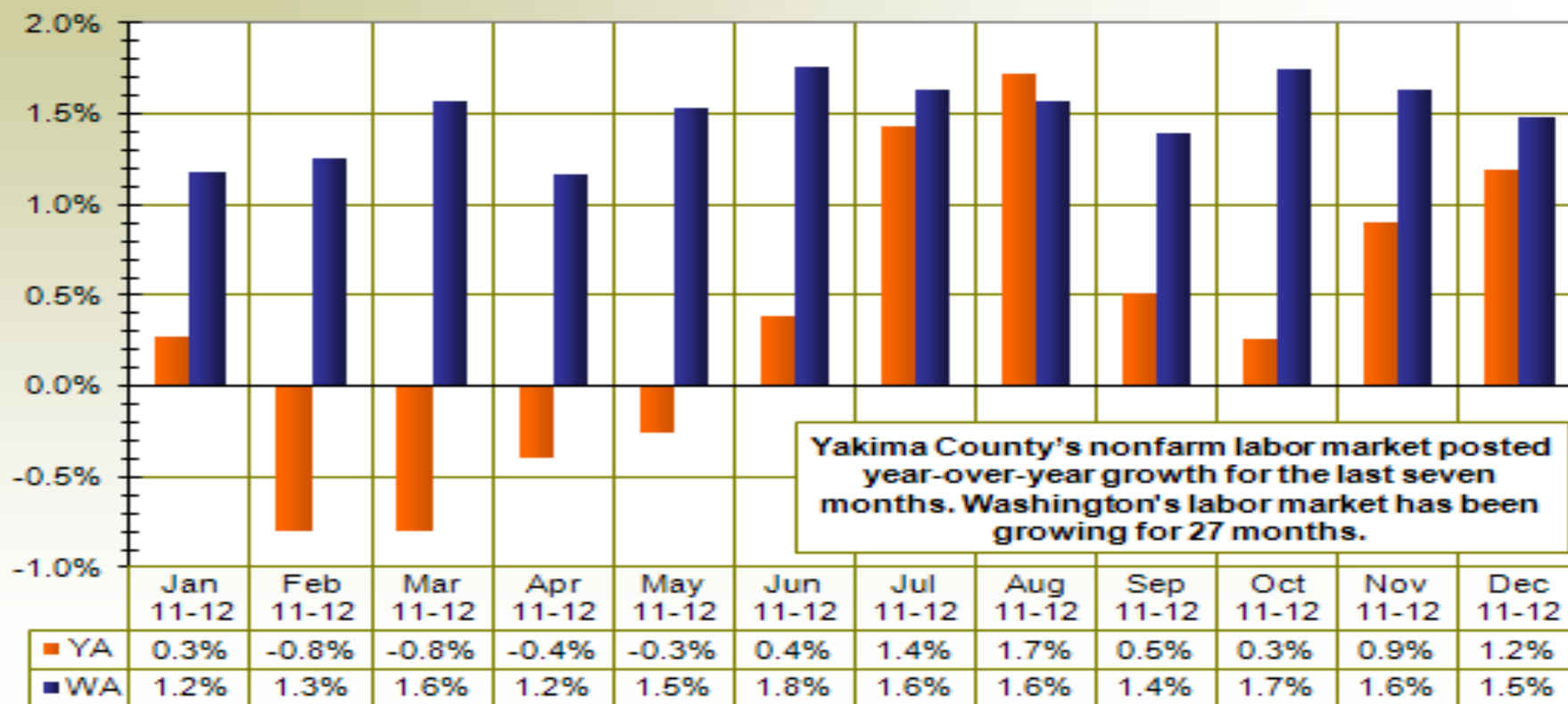


# Yakima County and Washington: Construction Employment Changes During the Last 20 Quarters (i.e., 2008-2012)



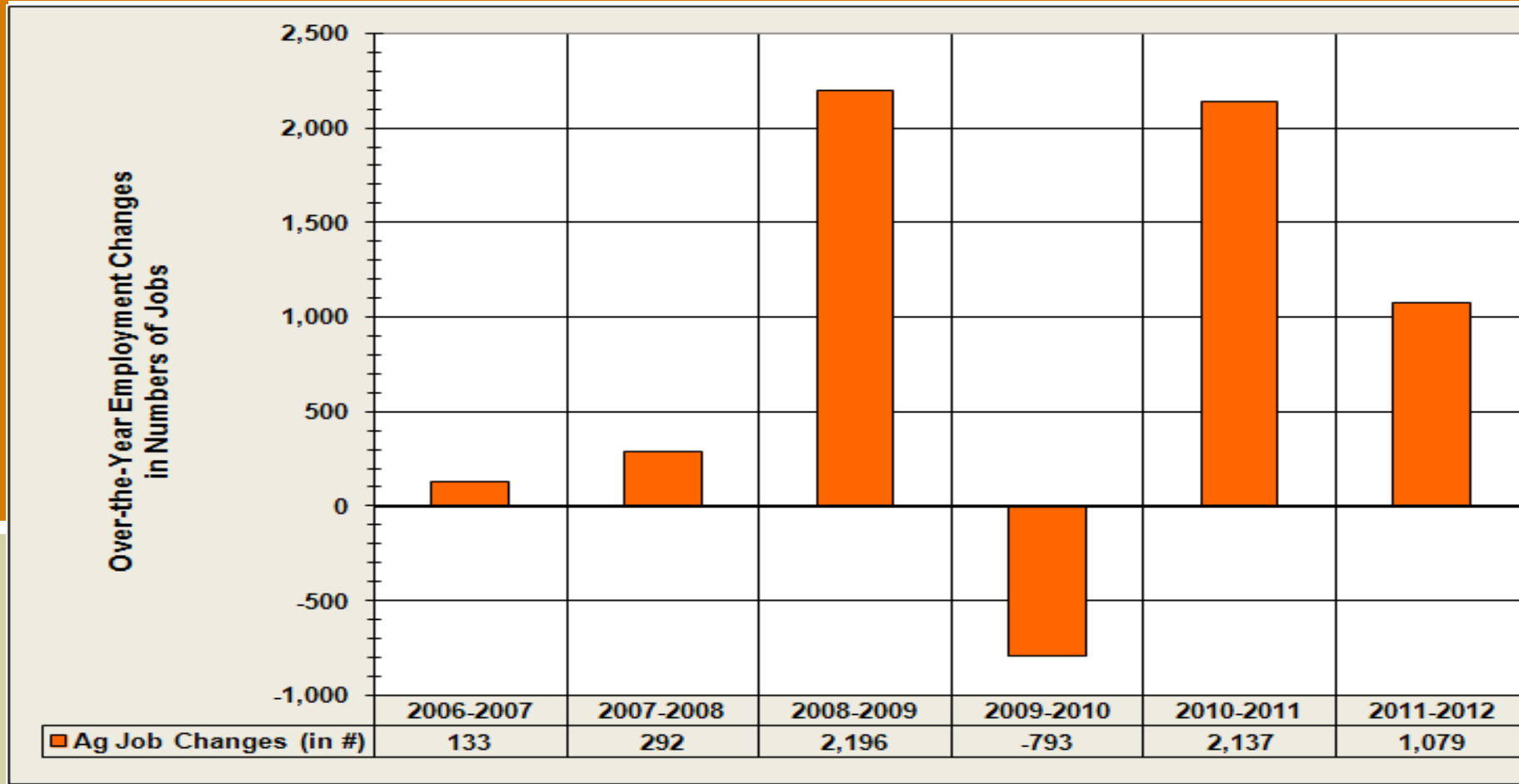
# Nonfarm Employment Changes in Yakima County and Washington in the last twelve months

**Yakima MSA and Washington:  
Total Nonfarm Employment Change Percentages  
During the Last Twelve Months**

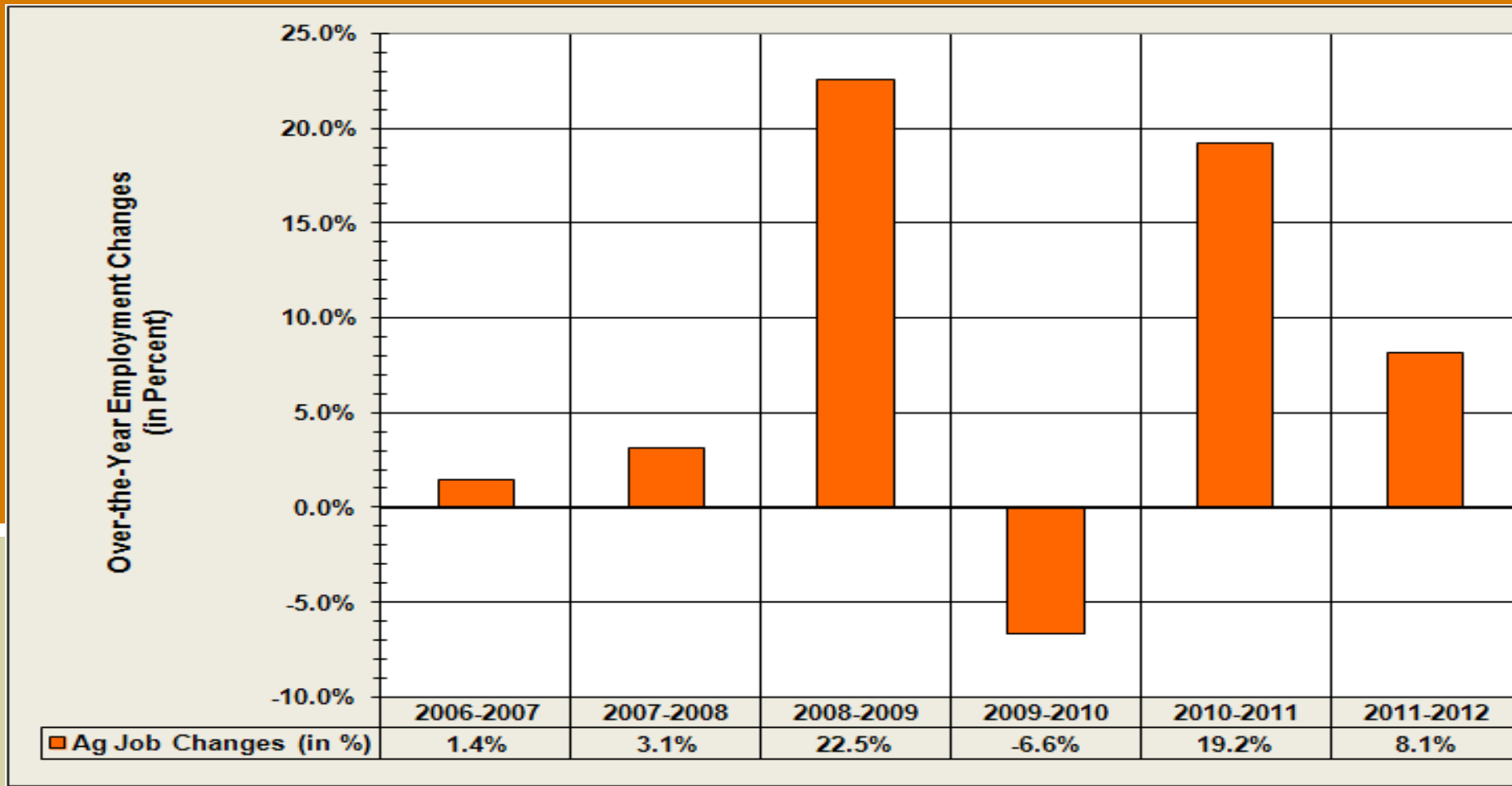




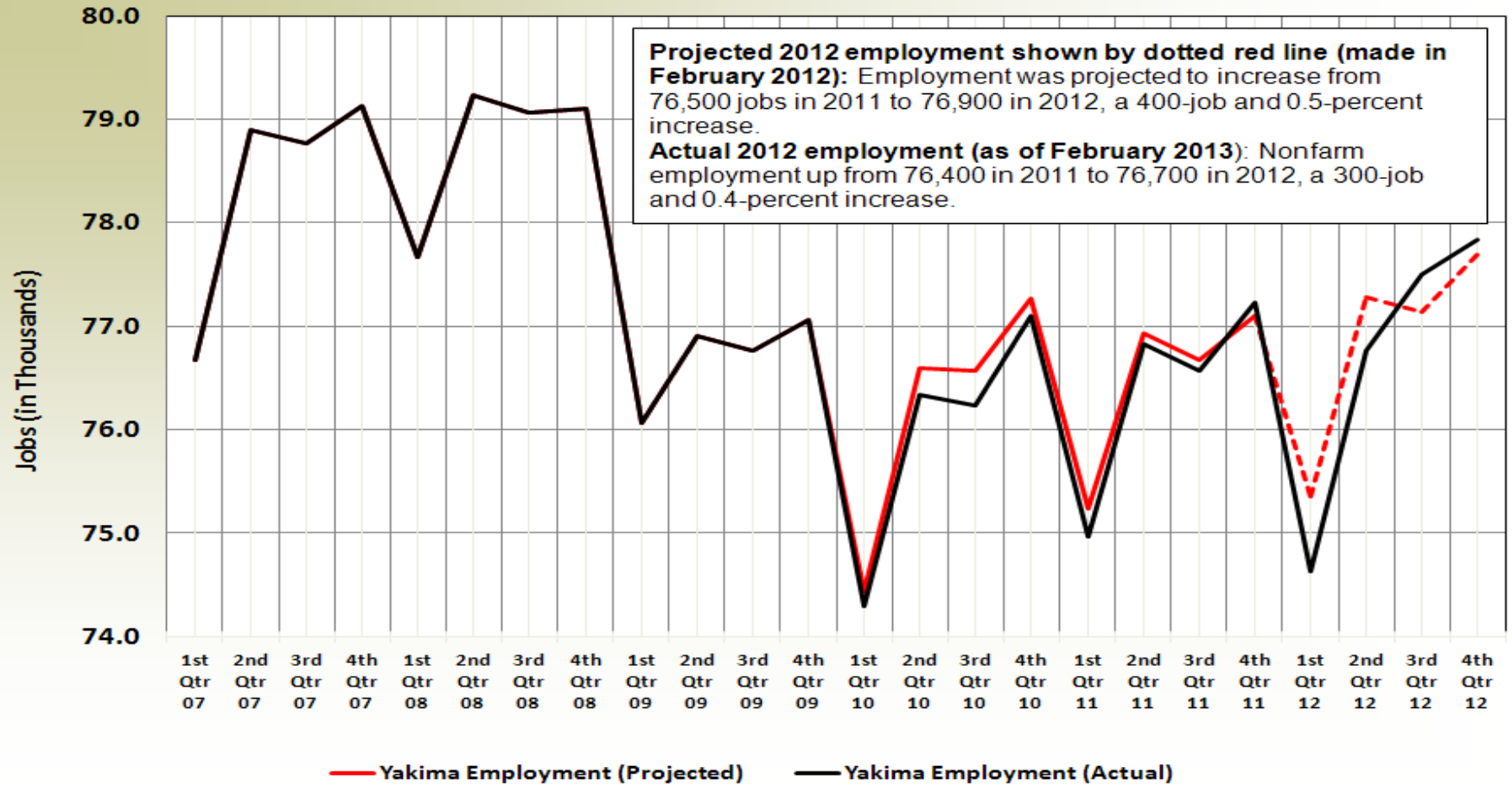
# Area 2 (Yakima and Klickitat Counties): Seasonal Agricultural Job Changes (in #s) from 2007-2012



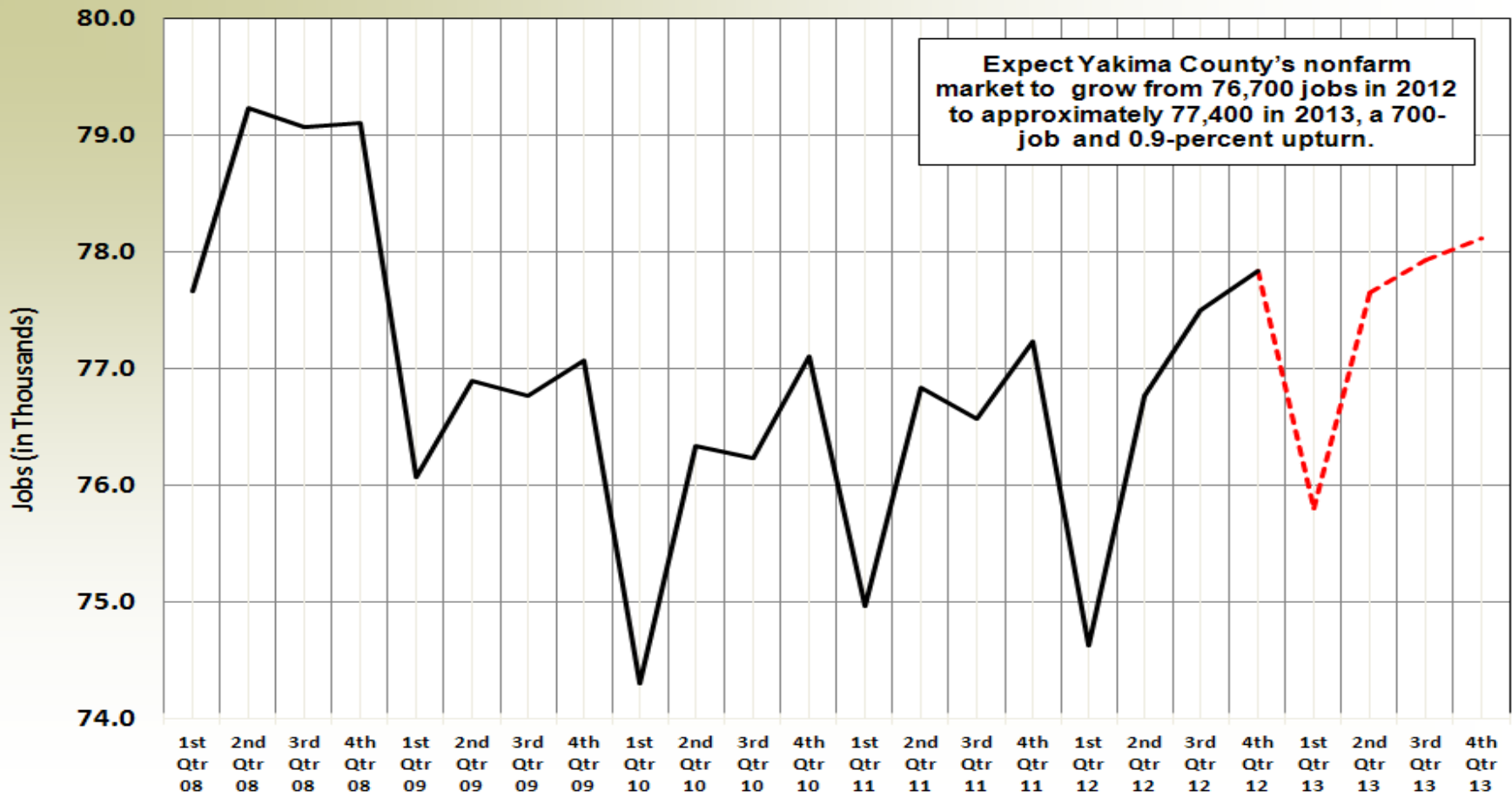
# Area 2 (Yakima and Klickitat Counties): Seasonal Agricultural Job Changes (in %) from 2007-2012



# Projected versus Actual Nonfarm Job Growth in Yakima County in 1<sup>st</sup>-4<sup>th</sup> Quarters 2012



# Projected Nonfarm Job Growth in Yakima County for 1<sup>st</sup>-4<sup>th</sup> Quarters 2013



# **Yakima County – 2012 in Review**

## **Bottom Line: “More good news, than bad.”**

- The County’s unemployment rate declined from 10.1 in 2011 to 9.8 percent in 2012.**
- Civilian labor force grew from 124,750 in 2011, to 125,970 last year, up 1,220 residents and 1.0-percent. (Yakima County’s CLF shrank 0.7 percent in 2011.)**
- Nonfarm employment averaged 76,700 in 2012; adding 300 jobs since 2011, a 0.4-percent increase.**
- Seasonal agricultural employment (in Yakima and Klickitat counties) rose from 13,279 in 2011; to 14,358 in 2012, a 1,079-job and 8.1-percent increase.**

# Questions?

**Donald W. Meseck**  
**Regional Labor Economist**  
[dmeseck@esd.wa.gov](mailto:dmeseck@esd.wa.gov)  
**509-573-4564**